



### Modular Design

Center and Side Pans are 53.5" long; containment areas can be easily assembled to any length desired.

Part# 9595

## Capture Hazardous Spills From Railroad Tanker Cars and Locomotives

Ultra-TrackPans have been designed to provide spill containment at industrial rail sidings, locomotive maintenance and fueling facilities. Available in virtually any length, Ultra-TrackPans may be used to collect small spills and leaks OR to capture and channel off significant spills caused by defective equipment or a major overflow.

- Prevent Costly Cleanup and Regulatory Fines.
- Slip-Resistant Design — Entire top surface is safe to walk on, even when wet or oily.
- All Polyethylene Construction — Rugged TrackPans withstand harsh chemicals and are designed to function in temperatures ranging from -40° F to +140° F.
- Sealed System — Polyethylene gaskets keep spills from falling between the rails and Pans.
- Trucks and other vehicles can drive over TrackPans with grates in place.\*

*\*To drive over TrackPans, firm footing must be beneath the Pans; also must "ramp up" to Side Pans with asphalt or concrete.*

U.S. Patent Nos. 5,562,047; 6,173,856; Other Pat. Pending

More information on pages 38 & 39 →

### Ultra-TrackPans are available in Two (2) Models:



TrackPans with Grates, No Covers



TrackPans with Grates and Covers



# Optional TrackPan Covers Keep Rainwater Out Of The Pans, Providing Effective Stormwater Management

Unique stormwater feature is designed to eliminate "pooling" of rain that falls on top of the Center Pan Covers; rain is channeled onto the ballast between the tracks, stays out of the Pans.



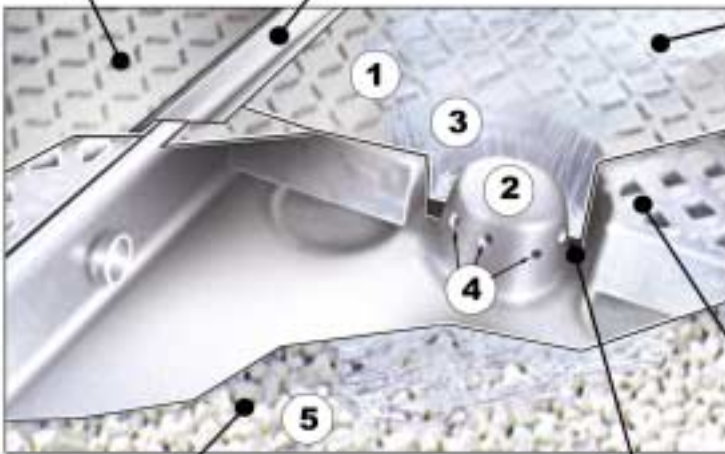
Center Cover Part # 9580



Center TrackPan Stormwater Feature

Center TrackPan Covers

Center Cover Overlap Lip



Stormwater Flow — Rain that falls on top of the Center TrackPan Cover (1) is channeled toward the Stormwater Feature (2). It then "cascades" down the cover "spout," (3) through the "stormwater ports" (4) and onto the ballast (5).

TrackPan Grate (1 of 2 in each Center TrackPan)

Ballast below Center TrackPans

Stormwater gasket seats just below the stormwater ports.



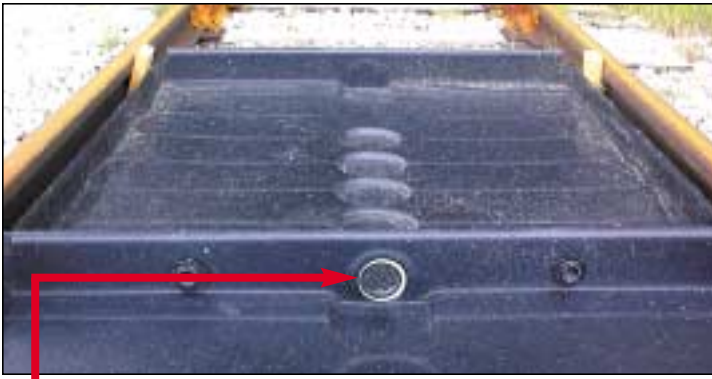
- Meets New York State Chemical Bulk Storage Regulation Section 599.17c — Secondary Containment for Transfer Stations.



Modular TrackPans can be assembled in any desired length — additional Pans can be added as your containment needs grow.



Ultra-TrackPans can be customized to accommodate switches, frogs, adjacent concrete platforms, etc.



Large, 3"-diameter flow-through channels allow spills to quickly travel from one pan to the next. Channels are located at the low point in each Center and Side TrackPan.



All Center and Side TrackPans are molded with pipe fitting locators at their lowest point. Below-grade piping can be installed to channel large spills to oil/water separators, holding ponds, etc.

**Note: Visit [www.trackpans.com](http://www.trackpans.com) for more detailed information.**



- **Low Maintenance** — Unlike carbon steel track pans, TrackPans will not rust or corrode. Polyethylene resin is treated with a UV inhibitor, resists degrading effects of the sun.
- **Low Cost Installation** — Lightweight TrackPans can be easily installed without heavy lifting equipment, i.e., forklifts, cranes, backhoes, etc. Minimal tools and labor required.
- **Slip Resistant Surfaces** — Pans, grates and covers have been designed with safety in mind. All top surfaces resist slips when wet or oily.
- **Long Work Life** — Estimated to perform for 20–30 years; longer than fiberglass pans.

## Installation Is Simple!



Flow-through channels — All Pans are connected "end-to-end" with bulkhead fittings, and a 3-inch diameter flow-through channel.



Closed-cell, polyethylene gaskets are then installed to provide a seal between the Pans and rails. (Black gaskets are provided.)



Side Pans are secured in place with rebar or other fasteners. (2-foot-long rebar fasteners with protective caps are available as options.)

ULTRA-TRACKPANS		
TrackPans with Grates, No Covers	TrackPan Covers Only	Options
<p>Part# 9566: <b>Center TrackPan with Grates</b> (Includes 2 bulkhead fittings, 4 gaskets, 2 grates) Dimensions: 53 1/2" x 53 1/2" x 6" • Weight: 106 lbs. Containment Capacity: 18 gallons</p>	<p>Part# 9580: <b>Cover for Center TrackPan</b> Dimensions: 56" x 54" Weight: 24 lbs.</p>	<p>Part# 9584: <b>Rebar Fasteners with Protective Caps</b> 20-Pack</p> <p>Part# 9559: <b>3" dia. Bulkhead Fitting</b> (for below-grade piping)</p> <p>Part# 9586: <b>Sorbent Mats, Center Pan</b> (2/set), 10-Pack</p>
<p>Part# 9576: <b>Side TrackPan with Grate</b> (Includes 1 bulkhead fitting, 2 gaskets, 1 grate) Dimensions: 53 1/2" x 27 1/2" x 6" • Weight: 60 lbs. Containment Capacity: 19 gallons</p>	<p>Part# 9581: <b>Cover for Side TrackPan</b> Dimensions: 56" x 27 3/4" Weight: 11 lbs.</p>	<p>Part# 9585: <b>Sorbent Mats, Side Pan</b> 20-Pack</p> <p>Part# 9571: <b>Grate Only for Center Pan (Left)</b> Part# 9572: <b>Grate Only for Center Pan (Right)</b></p> <p>Part# 9573: <b>Grate Only for Side Pan</b></p>

**NOTE: Ultra TrackPans can also be ordered as complete systems: Popular 9-foot, 40-foot and 60-foot systems are available.**