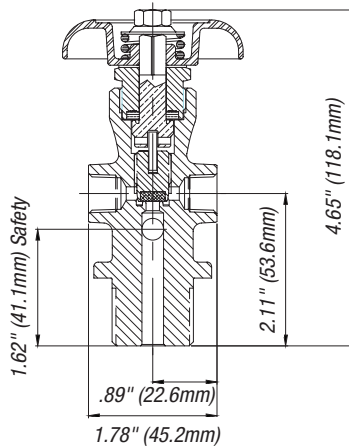


Alternative Energy Valves

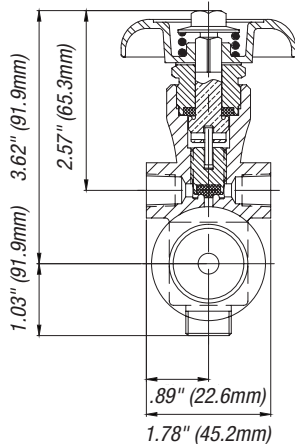
DF Series
Alternative Fuel Valves



DF11655-XX



DFN11550-XX



Key Features & Benefits

- Dual outlet valves for fuel gas manifold use
- Dual outlet design allows for manifolding without use of adapters or tees, eliminating multiple joints
- Location of outlets above valve seat enables individual cylinder isolation without shutting off manifold
- Designed for direct manifold connections, reducing components and leak points
- Crimped seat feature prevents seat extrusion and cold flow of the polymer seat
- Available in multiple seat material configurations to accommodate all high-purity gas applications
- Increased flow (Cv) to aid in reducing vent and purge times
- Low operating torque design to ensure ease of operation during filling and use
- Available with unitized Pressure Relief Device having fuse-metal backed or unbacked burst disc

Ordering Information					
Sherwood Part Number	Gas Service	Number of Outlets	Outlet Orientation	Outlet Thread Size	Inlet Thread Size
DF11661-XXFKF	Air/Oxygen, Inert Gas	Two 180° Apart	Horizontal Vertical	¼" NPT Female	¾" NGT
DFN11555-XXHFKF	CNG/Hydrogen, Methane	Two 180° Apart	Horizontal Vertical	¼" NPT Female	1.125 UNF-2A Straight
DF11565-XXHFKF DF11665-XXFKF	CNG/Hydrogen, Methane	Two 180° Apart	Horizontal Vertical	¼" NPT Female	¾" NGT
DFN16550-XXHFKP	Air/Oxygen, Inert Gas, CNG/Hydrogen, Methane	Two 180° Apart	Horizontal	7/16"-20 UNF-2B Straight	1.125 UNF-2A Straight
DFN11550-XXHFKP	Air/Oxygen, Inert Gas, CNG/Hydrogen, Methane	Two 180° Apart	Horizontal	¼" NPT Female	1.125 UNF-2A Straight
DFN11650-XXKP	Air/Oxygen, Inert Gas, CNG/Hydrogen, Methane	Two 180° Apart	Vertical	¼" NPT Female	1.125 UNF-2A Straight

PLEASE NOTE: Part numbers beginning with "DFN" represent Electroless Nickel Plated valves.

For Product Markings Reference, see **D** in the Appendix



DF Series

Alternative Fuel Valves

Design Specifications		
	English	Metric
Maximum Working Pressure	6250 PSI	431 Bar
Burst Pressure	20,000 PSI	1379 Bar
Storage Temperature Range	-65° F to +155° F	-54° C to +68° C
Operating Temperature Range	-50° F to +120° F	-46° C to +49° C
Minimum Cycle Life	5000 Cycles	
Operating Torque	15–25 in.-lbs.	1.7–2.8 N-m
Closing Torque	25–35 in.-lbs.	2.8–3.9 N-m
Bonnet Installation Torque	45–55 ft.-lbs	61–74.5 N-m
Pressure Relief Device Installation Torque	30–40 ft.-lbs.	40.7–54 N-m
Stem Nut Installation Torque	Nut Flush with Top of Stem	

Materials of Construction	
Part Description	Materials of Construction
Body	Brass C37700
Bonnet	Brass C36000
Handwheel	Aluminum per ASTM SC84B
Handwheel Nut	ANSI 1010 Steel, Plated with Organic Zinc Chromate
Washer	Polypropylene
Plug & Seat Assembly	
Plug	PTFE Coated Brass C48500
Seat	PCTFE
Packing	PTFE
Pressure Relief Device Assembly	
Body	Brass C36000 (212° F or 165° F for backed devices)
Disc	Nickel Alloy 201
Gasket	Copper, Dead Soft
Spring	Zinc Plated, Steel Spring Wire, Hard Drawn
Stem & Tang Assembly	
Tang	Type 303 or 304 Stainless Steel, Passivated
Stem	Brass C36000
Pin	Type 18-8 or 302 Stainless Steel, Passivated

Standards Conformance	
CGA V-9	Standard for Gas Cylinder Valves
CGA S-1.1	Standard for Pressure Relief Devices
CGA V-1	Compressed Gas Cylinder Valve Outlet and Inlet Connections
A-A-59860	U.S. General Services Administration Standards for Gas Cylinder Valves

Inlet O-Ring for Straight Threaded DF Valves			
Sherwood Part Number	Material	Size	Qty
G216BPK	Buna-N 70 Durometer	1.125 UNF	100