



- Designed for drying and curing of bud harvests, soft gels and capsules
- Conforms to FDA Regulation Title 21 CFR 177.2420
- Ventilated sides or ends for quicker drying
- Interlock stacking increases drying room efficiency
- Temperature range continuous -60° to 250° F (-51° to 121° C)
- Easy integration with process equipment
- Won't bend, dent or deflect under heavy loads
- Smooth, non-porous surface is easy to clean
- Heavy-duty dolly available

TEND YOUR CROP, NOT YOUR TRAYS

MFG Drying Trays

Additional sizes available. If you do not see the size you need, please call. A friendly team member is standing by!

Model No.	Description	Top Outside Dimensions (L x W x H)					
		inches	mm	inches	mm	inches	mm
332008	Drying Tray designed for racking system	25 3/4	654	18	457	1 1/8	29
600008	Drying Tray with drop ends	29 7/8	759	23 7/8	606	1 1/2	38
600108	Drying Tray with drop sides	29 7/8	759	23 7/8	606	1 1/2	51
600208	Drying Tray with drop sides	23 7/8	606	14 15/16	379	1 3/8	35
600308	Drying Tray with drop ends	29 7/8	759	23 7/8	606	2	51
600408	Drying Tray with drop ends	29 7/8	759	23 7/8	606	1	25
642008	Drying Tray with drop ends and drop sides	29 7/8	759	23 7/8	606	1 3/8	35
643008	Drying Tray with drop sides	32 7/8	833	18 7/8	478	1 5/8	39
805408	Drying Tray with drop ends and drop sides	30 3/8	772	15 7/8	403	3 5/8	92
805508	Drying Tray with drop ends and drop sides	30 3/8	772	15 7/8	403	2 7/8	73

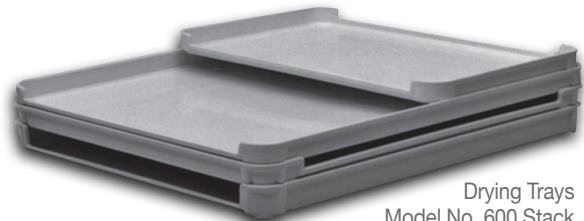
Standard Colors



White

Gray

**Additional colors available upon request*



Drying Trays
Model No. 600 Stack



Drying Tray
Model No. 642008



Solutions beyond your expectations

Phone: 888-709-8070 | sales@chemtech-usa.com
www.chemtech-us.com



MOLDED FIBER GLASS TRAY
6175 Route 6 · Linesville, PA 16424 USA

PH 814 683.4500 or 800 458.6050
FX 814 683.4504 www.mfgtray.com

MFGTPHbhgdcct05/18

